

BOARD UPDATE

PROSPER INDEPENDENT SCHOOL DISTRICT



LILYANA ELEMENTARY SCHOOL (ES#16)

AS OF NOVEMBER 2022

WORK COMPLETED AND ONGOING:

Site

- All paving is poured, all control and expansion joints are being sealed
- First pour on retaining wall complete
- Complete gas line
- Installation of kitchen grease tank
- Complete inlet tops
- Continue installation of concrete retaining wall

Building

- All slab pours complete
- Plumbing underground at shelter complete
- ICF wall erection complete – Area 4
- ICF wall erection ongoing – Area 3
- Structural steel on site – Areas 3 and 4
- Installing joist and deck – Area 4

Aerial - Looking Northeast



BOARD UPDATE

PROSPER INDEPENDENT SCHOOL DISTRICT



LILYANA ELEMENTARY SCHOOL (ES#16)

AS OF NOVEMBER 2022

Aerial - Looking Northwest



Aerial - Looking Southeast



BOARD UPDATE

PROSPER INDEPENDENT SCHOOL DISTRICT



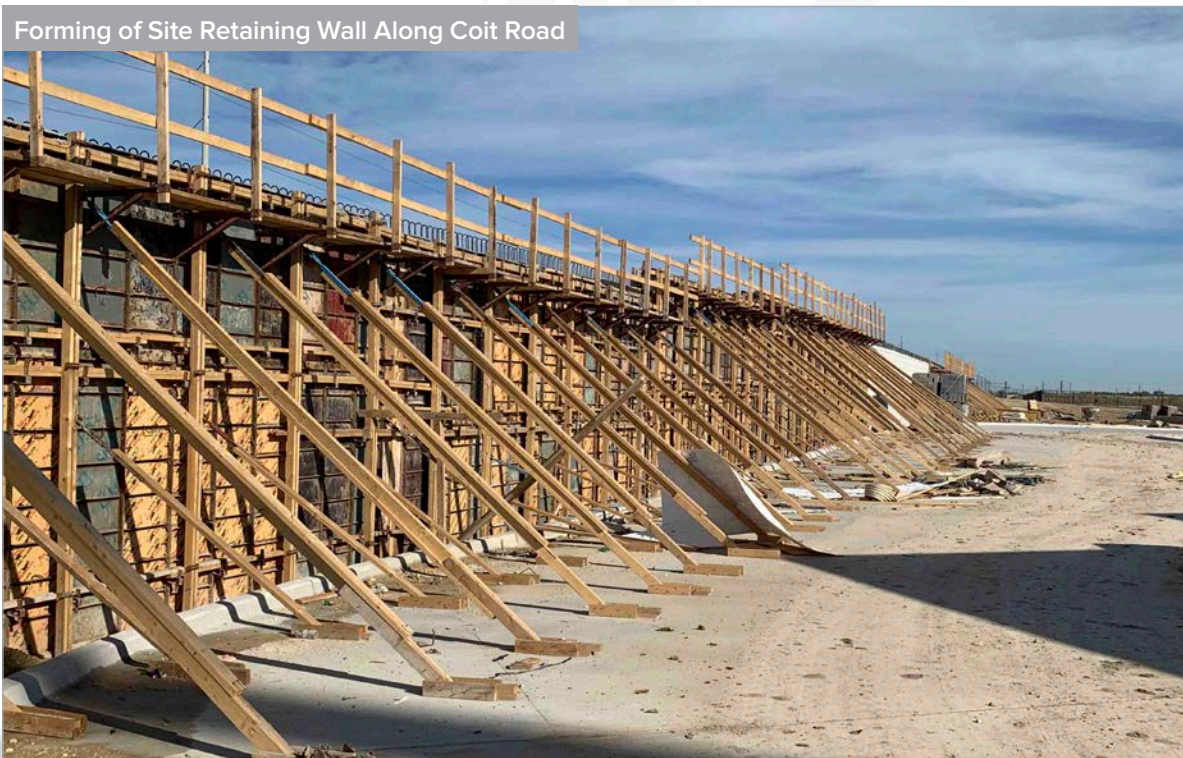
LILYANA ELEMENTARY SCHOOL (ES#16)

AS OF NOVEMBER 2022

Aerial - Looking Southwest



Forming of Site Retaining Wall Along Coit Road



BOARD UPDATE

PROSPER INDEPENDENT SCHOOL DISTRICT



LILYANA ELEMENTARY SCHOOL (ES#16)

AS OF NOVEMBER 2022

Site Retaining Wall Along Coit Road



Placing Structural Steel at Secondary Corridor (Cafetorium/Gymnasium)



BOARD UPDATE

PROSPER INDEPENDENT SCHOOL DISTRICT



LILYANA ELEMENTARY SCHOOL (ES#16)

AS OF NOVEMBER 2022

Main Entry Corridor



Secondary Corridor (Cafetorium/Gymnasium)



BOARD UPDATE

PROSPER INDEPENDENT SCHOOL DISTRICT



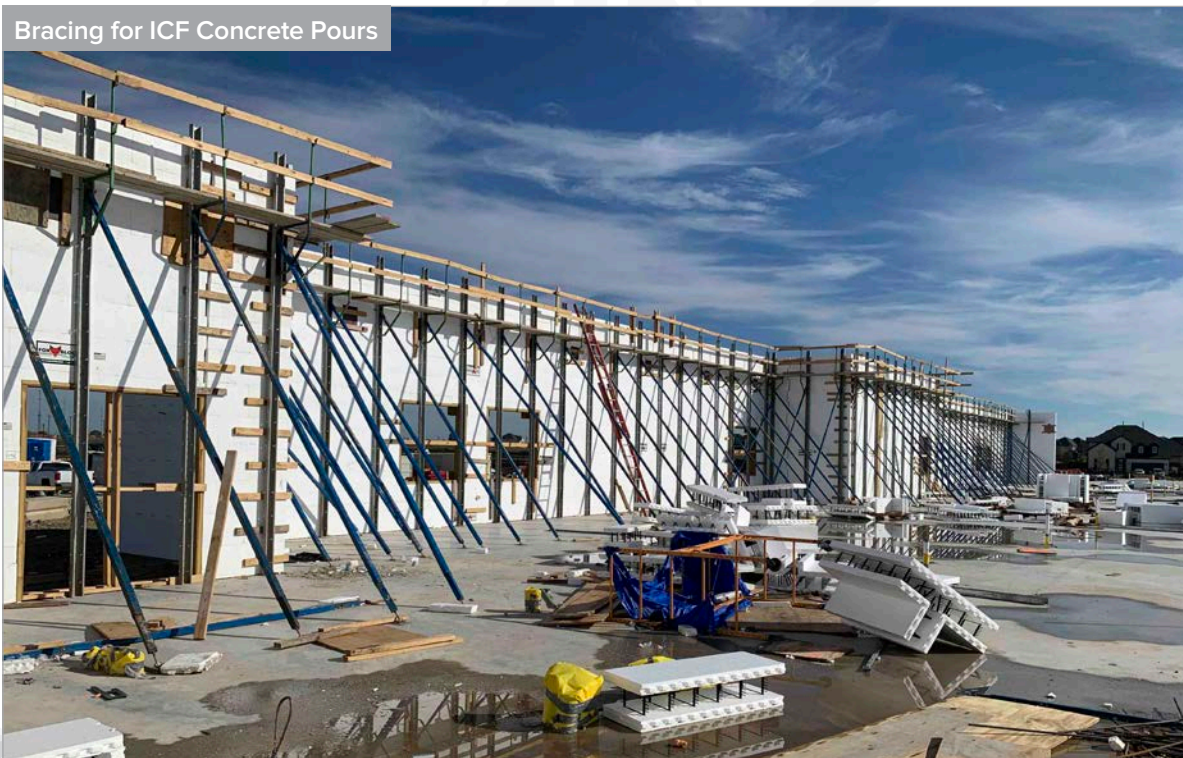
LILYANA ELEMENTARY SCHOOL (ES#16)

AS OF NOVEMBER 2022

ICF at Kitchen Area



Bracing for ICF Concrete Pours



BOARD UPDATE

PROSPER INDEPENDENT SCHOOL DISTRICT



LILYANA ELEMENTARY SCHOOL (ES#16)

AS OF NOVEMBER 2022

Administration Area



ICF Along Rear Elevation



BOARD UPDATE

PROSPER INDEPENDENT SCHOOL DISTRICT



LILYANA ELEMENTARY SCHOOL (ES#16)

AS OF NOVEMBER 2022

Steel Decking Install at Cafetorium



BOARD UPDATE

PROSPER INDEPENDENT SCHOOL DISTRICT



DAN CHRISTIE ELEMENTARY SCHOOL (ES#17)

AS OF NOVEMBER 2022

WORK COMPLETED AND ONGOING:

Site

- Mass grading for building and site complete
- Grading of building pad complete
- Utility installation ongoing
- Fire lane grading ongoing

Building

- Pier installation ongoing – Areas 3 and 4
- Grade beams ongoing – Area 4
- Underground MEP installation ongoing – Area 4



BOARD UPDATE

PROSPER INDEPENDENT SCHOOL DISTRICT



DAN CHRISTIE ELEMENTARY SCHOOL (ES#17)

AS OF NOVEMBER 2022



LOOKING NORTH



LOOKING SOUTH

BOARD UPDATE

PROSPER INDEPENDENT SCHOOL DISTRICT



DAN CHRISTIE ELEMENTARY SCHOOL (ES#17)

AS OF NOVEMBER 2022

Future Fire Lane Connection to Crutchfield Road



East Property Line Fire Lane



BOARD UPDATE

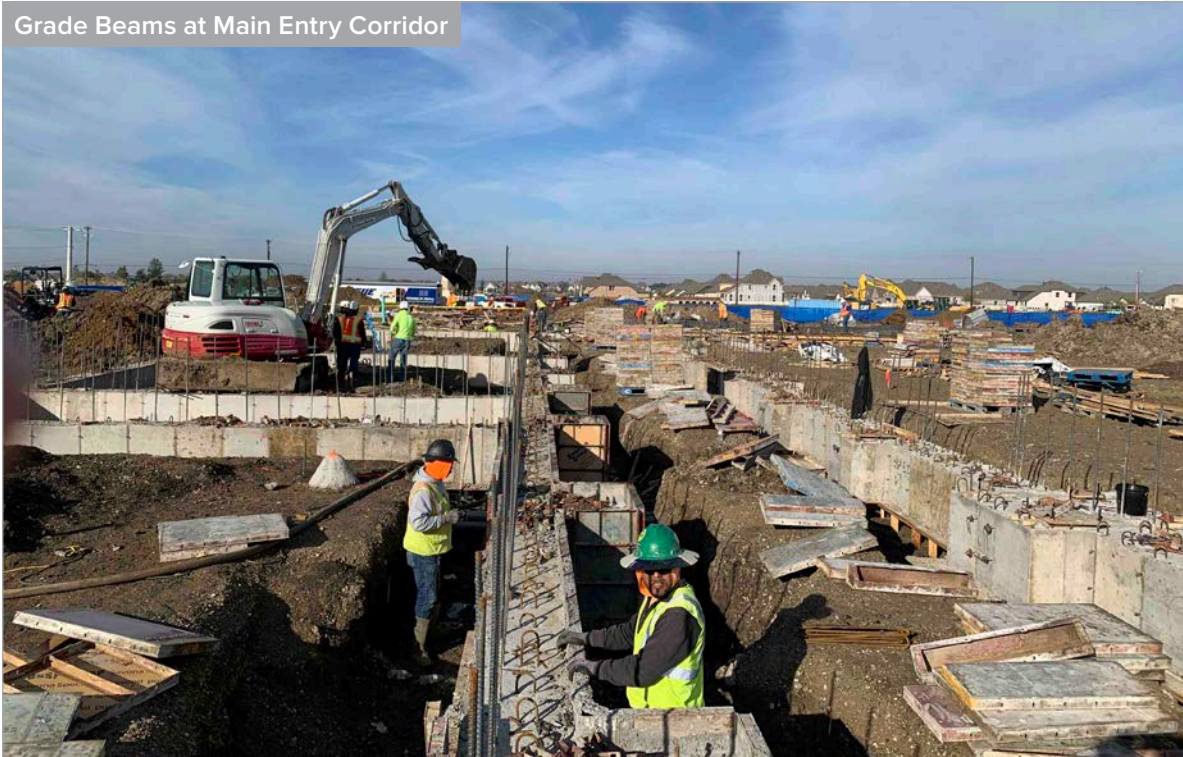
PROSPER INDEPENDENT SCHOOL DISTRICT



DAN CHRISTIE ELEMENTARY SCHOOL (ES#17)

AS OF NOVEMBER 2022

Grade Beams at Main Entry Corridor



Trenching at Kitchen Area



BOARD UPDATE

PROSPER INDEPENDENT SCHOOL DISTRICT



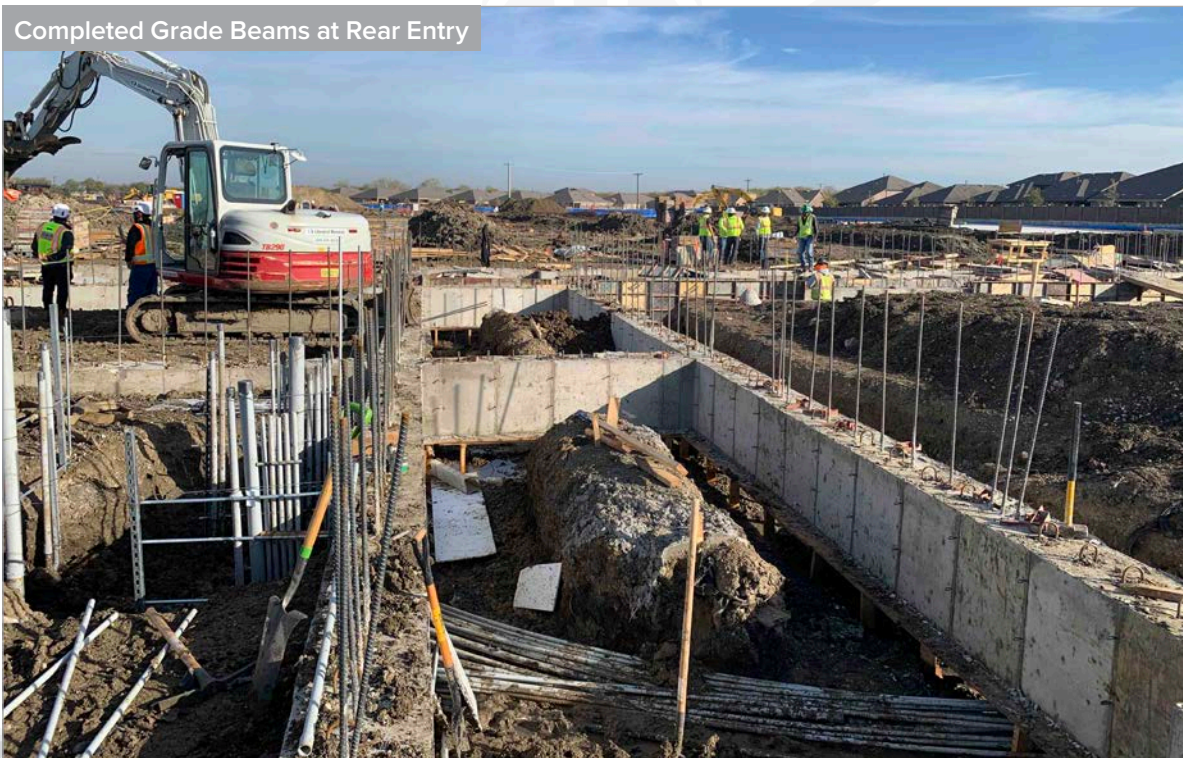
DAN CHRISTIE ELEMENTARY SCHOOL (ES#17)

AS OF NOVEMBER 2022

Main Electrical Room



Completed Grade Beams at Rear Entry



BOARD UPDATE

PROSPER INDEPENDENT SCHOOL DISTRICT



BRENDA CALHOUN EARLY CHILDHOOD SCHOOL AS OF NOVEMBER 2022

WORK COMPLETED AND ONGOING:

Site

- The concrete fire lane paving is complete

Building

- Underground MEP at the building slab is complete
- The concrete for the building slabs is complete – Areas A, B, and half C
- Fire Marshal has released Pogue to proceed with all vertical construction

- Structural steel deliveries are ongoing and steel erection is ongoing
- Metal stud/drywall subcontractor has mobilized and is preparing to start work – Area A
- Ductwork in area A to start soon



BOARD UPDATE

PROSPER INDEPENDENT SCHOOL DISTRICT



BRENDA CALHOUN EARLY CHILDHOOD SCHOOL

AS OF NOVEMBER 2022



WALNUT GROVE HIGH SCHOOL

JACKSBORO LN

LUCKENBACH DR

LOOKING NORTH



LUCKENBACH DR

JACKSBORO LN

LOOKING SOUTH

BOARD UPDATE

PROSPER INDEPENDENT SCHOOL DISTRICT



BRENDA CALHOUN EARLY CHILDHOOD SCHOOL

AS OF NOVEMBER 2022



Preparing for Void Form Placement



BOARD UPDATE

PROSPER INDEPENDENT SCHOOL DISTRICT



BRENDA CALHOUN EARLY CHILDHOOD SCHOOL

AS OF NOVEMBER 2022

Preparing for Void Form Placement



Structural Steel Progress



BOARD UPDATE

PROSPER INDEPENDENT SCHOOL DISTRICT



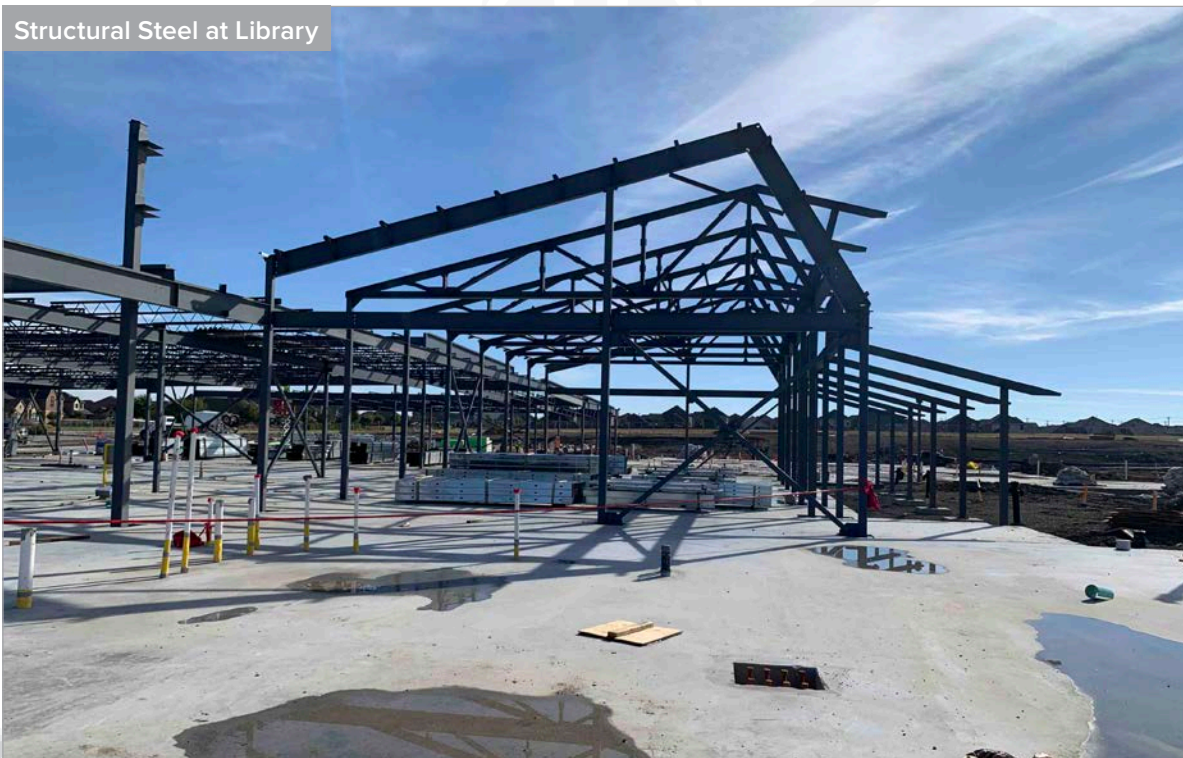
BRENDA CALHOUN EARLY CHILDHOOD SCHOOL

AS OF NOVEMBER 2022

Structural Steel Progress



Structural Steel at Library



BOARD UPDATE

PROSPER INDEPENDENT SCHOOL DISTRICT



BRENDA CALHOUN EARLY CHILDHOOD SCHOOL

AS OF NOVEMBER 2022

Structural Steel at Library



BOARD UPDATE

PROSPER INDEPENDENT SCHOOL DISTRICT



WALNUT GROVE HIGH SCHOOL (HS#3)

AS OF NOVEMBER 2022

WORK COMPLETED AND ONGOING:

Site

- Baseball and softball fields are ready for turf (turf installation will occur in 3 months)
- Baseball and softball bleacher seating foundations ongoing
- Detention pond irrigation complete
- Irrigation installation ongoing – south side of property
- Irrigation well drilling is complete
- Irrigation well holding tank to install in December
- Track excavation complete and installation of track & field components ongoing
- Northeast retaining wall installation ongoing

Building

- Steel erection complete – Areas A, B, C, D, F, L, M, P, R, S, and W
- Steel erection is ongoing – Areas G, J, K, and N
- Precast seating installation ongoing – Area J
- MEP/fire sprinkler overhead ongoing – Areas E, F, G, J, L and M
- Framing ongoing – Area Q and clouds – Areas E, F, G, L, and M
- Interior CMU walls ongoing – Areas J, L, and M

- Roofing ongoing – Areas D, E, K, P, and S
- Exterior waterproofing ongoing – Areas E, F, G, and L
- Masonry veneer installation ongoing at north side – Areas D, E, F, L, Q, and S
- Installation of masonry columns and arches ongoing at exterior – Area Q
- Interior storefront installation ongoing
- Fireproofing installation ongoing – Areas F, G, and J
- Fire alarm installation ongoing – Areas D, E, P, R, and S
- Painting ongoing – Areas D, N, P, R, and S
- Low-voltage rough-in ongoing – Areas D, N, P, Q, P, R, and S
- Security and access control installation ongoing – Areas D, E, P, R, and S
- Tile installation ongoing in corridors – Areas D, E, M, and N
- Display case framing in main corridor ongoing
- Wood wall and bench framing ongoing

Multipurpose Facility (MPF) and Ancillary Buildings

- Masonry veneer installation ongoing – Areas T, U, and V



BOARD UPDATE

PROSPER INDEPENDENT SCHOOL DISTRICT



WALNUT GROVE HIGH SCHOOL (HS#3)

AS OF NOVEMBER 2022



BOARD UPDATE

PROSPER INDEPENDENT SCHOOL DISTRICT



WALNUT GROVE HIGH SCHOOL (HS#3)

AS OF NOVEMBER 2022

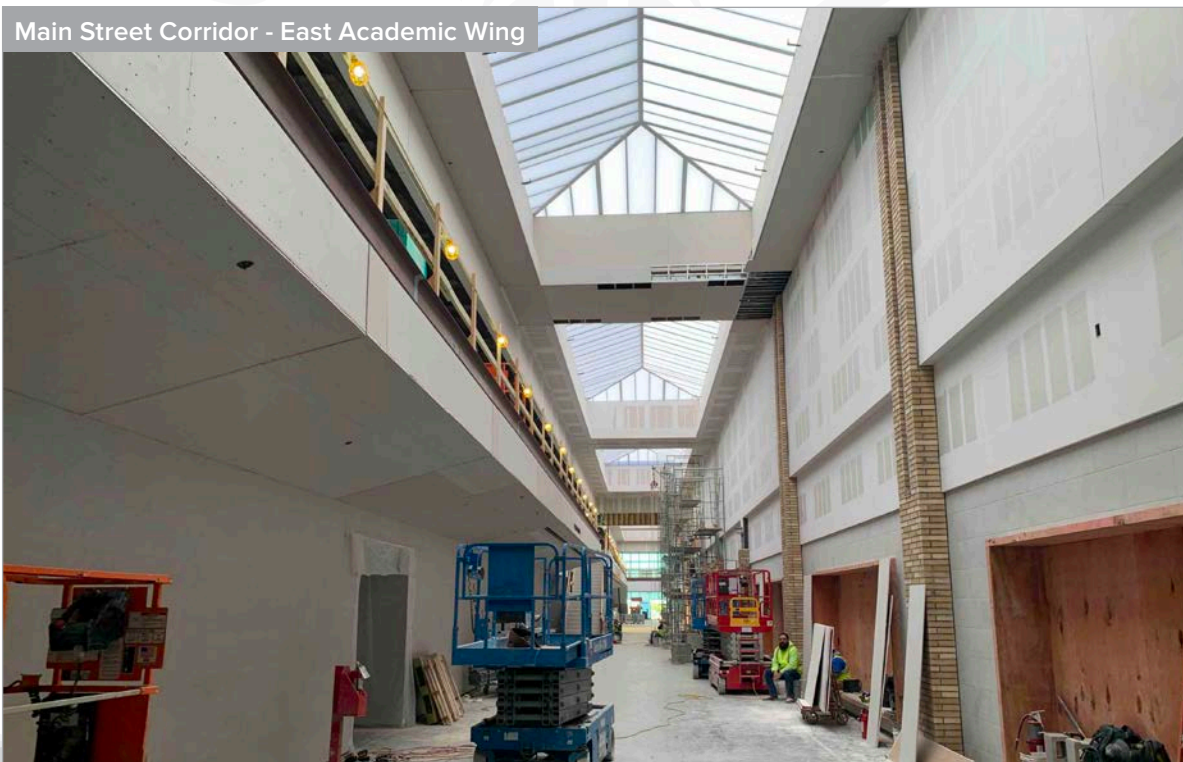


ROCK HILL HIGH SCHOOL

E 1ST ST

LOOKING SOUTHWEST

Main Street Corridor - East Academic Wing



BOARD UPDATE

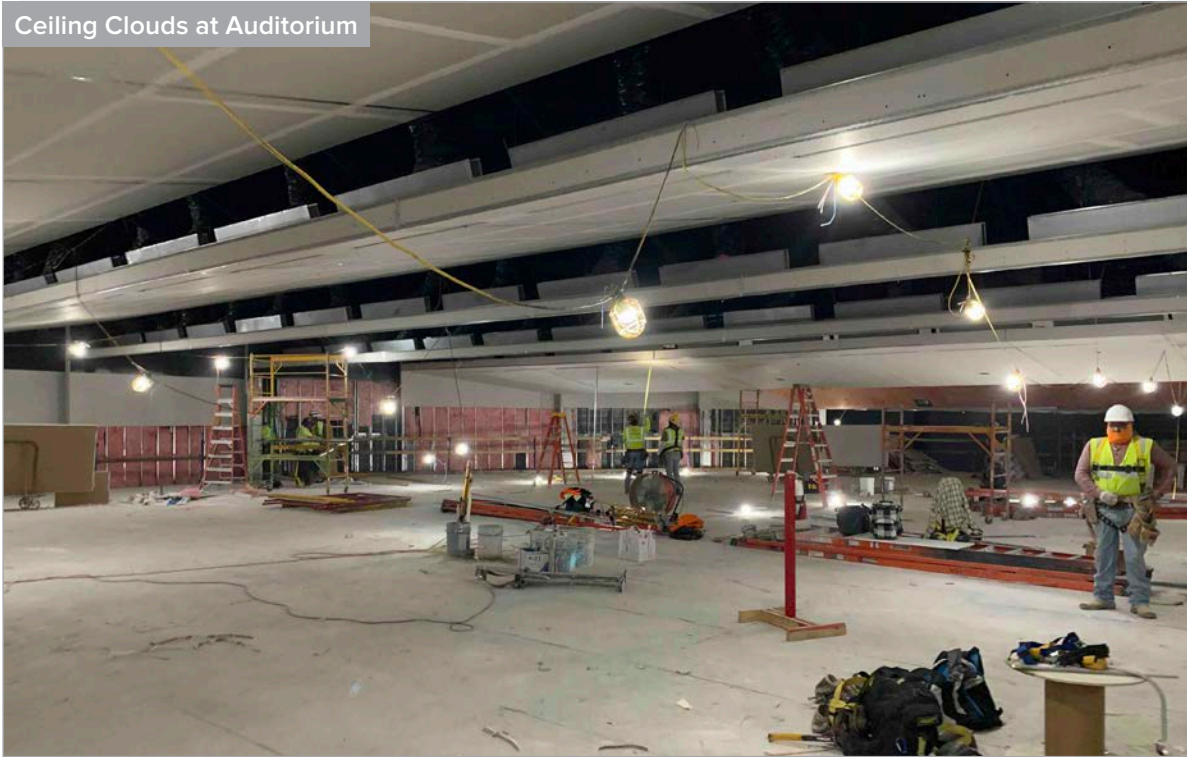
PROSPER INDEPENDENT SCHOOL DISTRICT



WALNUT GROVE HIGH SCHOOL (HS#3)

AS OF NOVEMBER 2022

Ceiling Clouds at Auditorium



Rear Entry



BOARD UPDATE

PROSPER INDEPENDENT SCHOOL DISTRICT



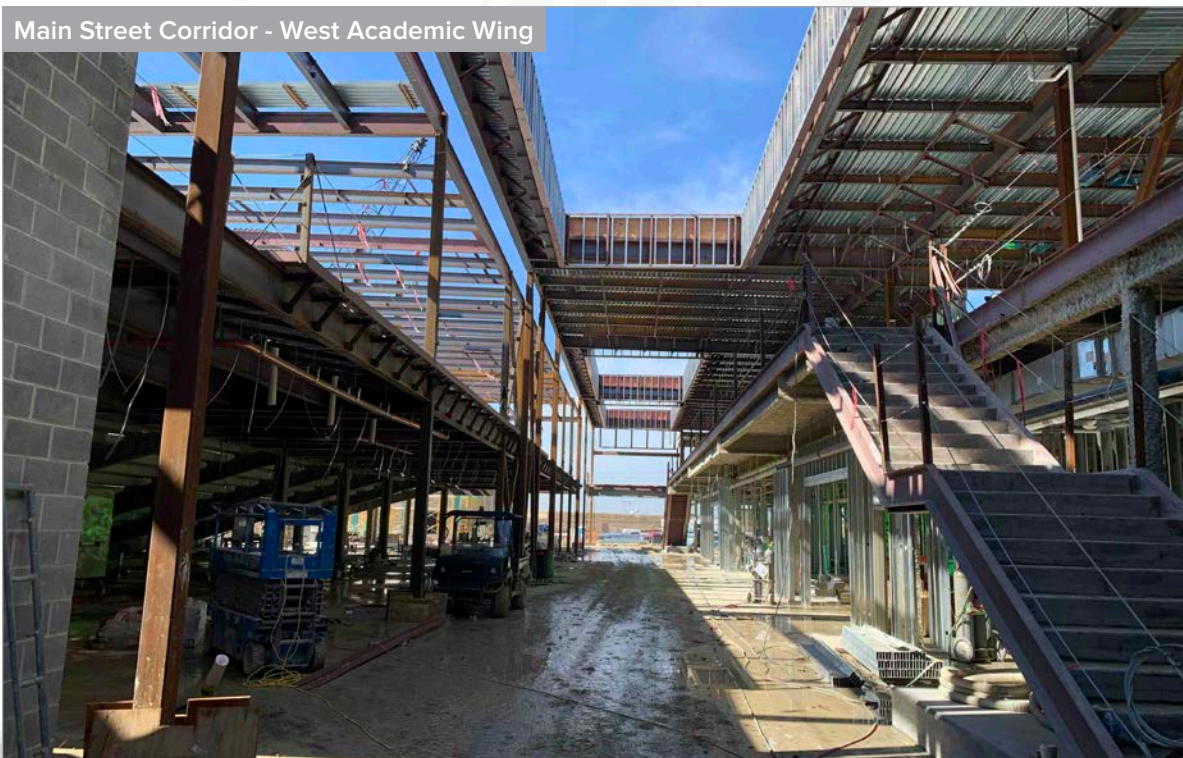
WALNUT GROVE HIGH SCHOOL (HS#3)

AS OF NOVEMBER 2022

Structure for Rear Canopy



Main Street Corridor - West Academic Wing



BOARD UPDATE

PROSPER INDEPENDENT SCHOOL DISTRICT



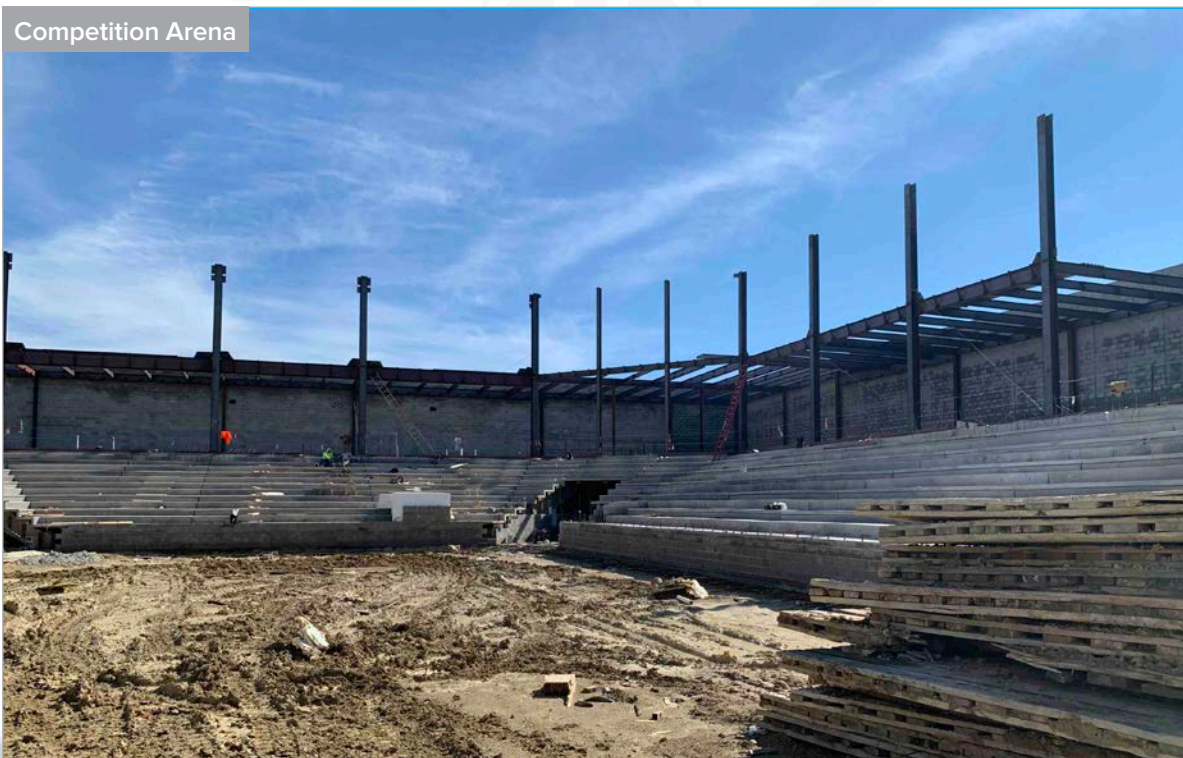
WALNUT GROVE HIGH SCHOOL (HS#3)

AS OF NOVEMBER 2022

Auxiliary Gyms (Tornado Shelter)



Competition Arena



BOARD UPDATE

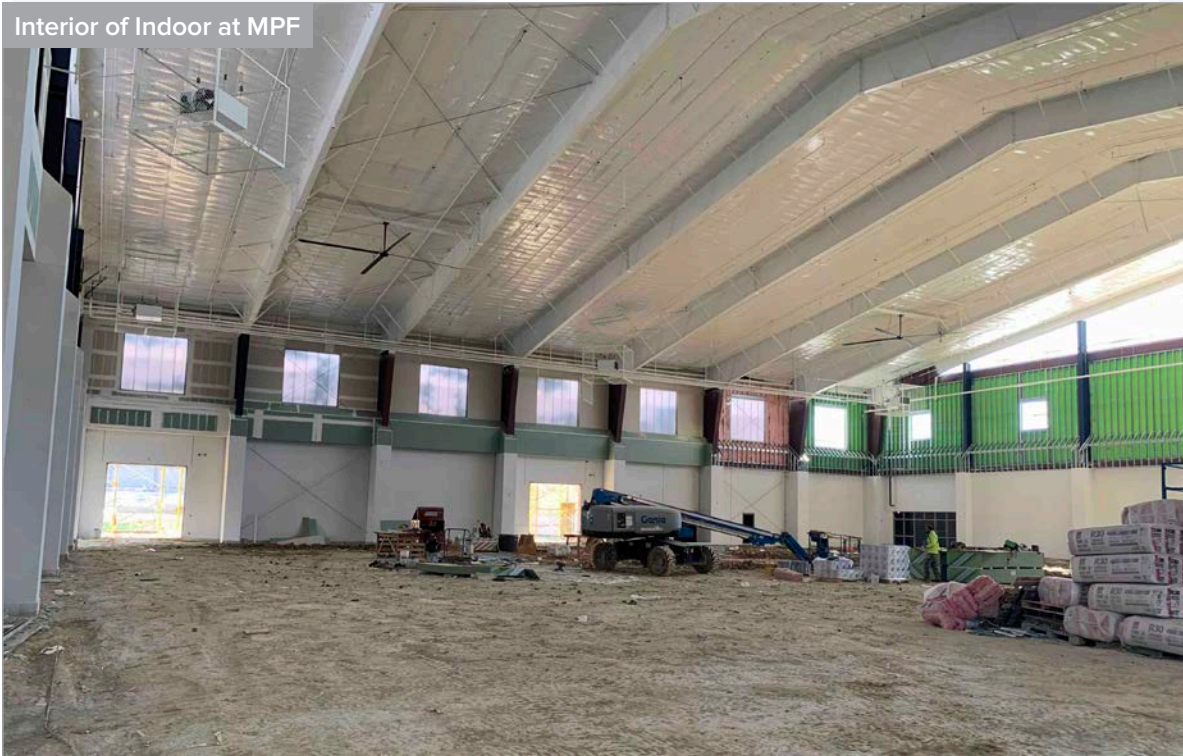
PROSPER INDEPENDENT SCHOOL DISTRICT



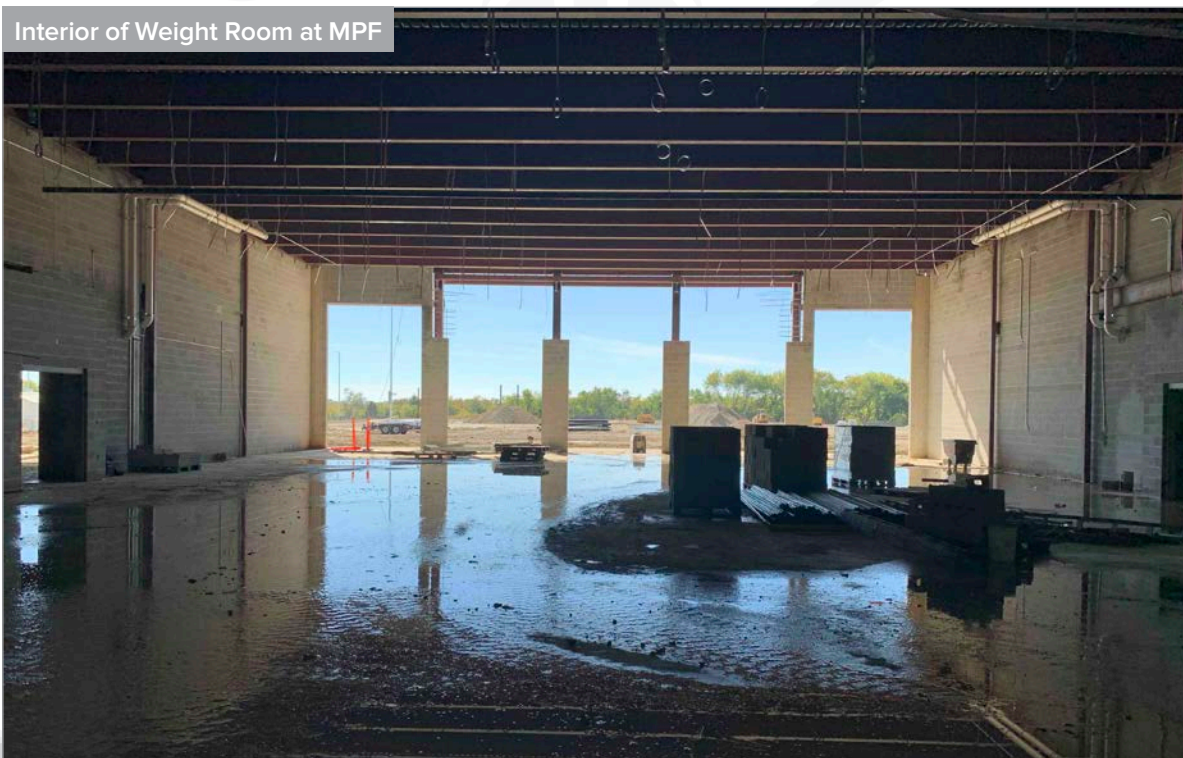
WALNUT GROVE HIGH SCHOOL (HS#3)

AS OF NOVEMBER 2022

Interior of Indoor at MPF



Interior of Weight Room at MPF



BOARD UPDATE

PROSPER INDEPENDENT SCHOOL DISTRICT



WALNUT GROVE HIGH SCHOOL (HS#3)

AS OF NOVEMBER 2022

Exterior of Weight Room at MPF



Concession Restroom Building Adjacent Football and Track Field



BOARD UPDATE

PROSPER INDEPENDENT SCHOOL DISTRICT



WALNUT GROVE HIGH SCHOOL (HS#3)

AS OF NOVEMBER 2022

Preparation for Track

